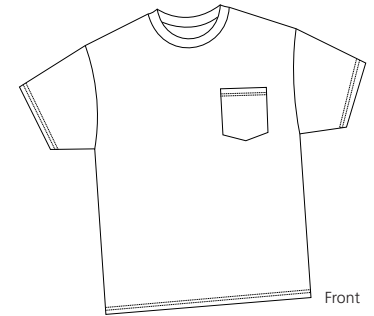
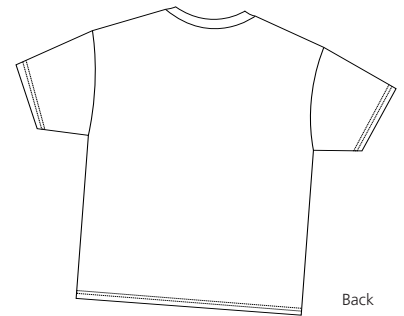


# 100% Cotton T-Shirt with Pocket

PORT & COMPANY®



Front



Back

## PC61P

- \* 6.1-ounce 100% cotton
- \* Taped shoulder to shoulder
- \* Coverseamed neck
- \* Double-needle Sleeve and Bottom hem

### Care Instructions:

Machine wash cold, inside out, with like colors. Only non-chlorine bleach when needed. Tumble dry medium. Medium-hot iron. Do not iron decoration.

### Finished Measurements in Inches

Size	S	M	L	XL	2XL	3XL	4XL	5XL	6XL
Neck	6.75	6.75	7.25	7.25	7.75	7.75	7.75	8.12	8.12
Chest	18	20	22	24	26	28	30	32	34
Body	27	29	30	31	33	34	35	36	37
Sleeve	16	18	19	20.5	22	23.5	25	26.5	28
Pocket	5.12x4.5	5.12x4.5	5.12x4.5	5.12x4.5	5.12x4.5	5.12x4.5	5.12x4.5	5.12x4.5	5.12x4.5

Neck measured by circumference. Chest width measured 1" below arm hole. Pocket measured HxW. Body length measured from back neck seam to hem. Sleeve length measured from shoulder seam to hem.

### Colors

White	<b>Darks</b>
<b>Lights</b>	Athletic Heather*
Ash**	Athletic Maroon
Light Blue	Black
Lime	Dark Green
Natural	Navy
	Orange
	Red
	Royal

### Color Chart

Colors	Ash	Athletic Heather	Athletic Maroon	Black	Dark Green	Light Blue	Lime	Natural
PMS	No Match	No Match	229C	Processed Black	5535C	543C	367C	No Match
Colors	Navy	Orange	Red	Royal	White			
PMS	296C	172C	200C	661C	No Match			

### Please Note:

Colors shown are approximate and for reference only. For closest match see PMS colors, or for exact match, returnable samples and grommated samples are available.

\*90/10 Cotton/Polly  
\*\*99/1 Cotton/Polly